

STAL S350GD - elementy gięte

Uwagi:

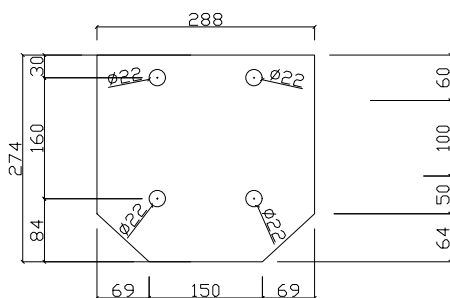
1. Elementy w złączach spawanych spawać na całej długości ich przylegania

2. Wszystkie niezwymlarowane spoiny wykonać jako

- pachwinowe obustronne  $a=0,5t$
  - pachwinowe jednostronne  $a=0,7t$
  - pachwinowe profile zamkniętych  $a=t$
  - doczołowe pełnoprzetopowe  $s=t$
- gdzie:  $a, s$  - grubości spoin,  $t$  - gruby

3. Połączenia śrubowe z wykorzystaniem śrub kl. 8.8, wykonać jako niespreżane,  
siłą odpowiednią do uzyskania dobrego przylegania elementów -  
dopuszczalne szczeliny  
w złączach do 2mm.

BLG1 274x288x16  
1SZT.



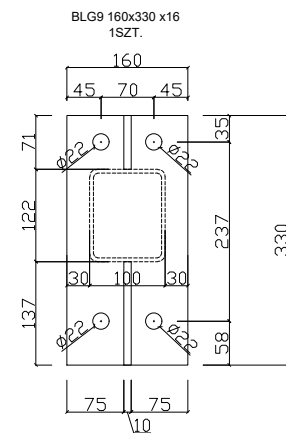
LG1 80x5  
1057t

Technical drawing of a mechanical part showing a side view and a top view. The side view shows a vertical plate with a horizontal flange at the bottom. The top view shows a rectangular plate with a central circular hole and two smaller circular holes on either side. Dimensions are given in millimeters.

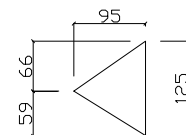
BLG10
95×125×10

BLG10
95x125x10

BLG9  
220x220x16



BLG10 95x125 x10  
163T



BLG10
95x125x10

BLG6
80x260x10

BLG7  
220x220x16

BLG5  
80x260x10

BLG6
80×260×10

BLG8  
50x50x10

11. *Chlorophyll *a** and *Chlorophyll *b** are the two main photosynthetic pigments in green plants. They are responsible for capturing light energy and converting it into chemical energy through the process of photosynthesis. Chlorophyll *a* is the primary pigment, while Chlorophyll *b* acts as an accessory pigment, transferring energy to Chlorophyll *a*.

ГРКЕ 804/11

BLG6
80x260x10

GRK 4 80x4



GRK3 80x4

GRK1 100x55

BLG5
80×260×10

 $0 \times 10$ 

BLG6
80×260×10

L.p.	PROFIL	Ilość	Długość	Masa 1m	Masa	Materiał
		[szt.]	[m]	[kg]	[kg]	
GRK1	RK100x5	1	4.180	14.41	60.23	S355
GRK2	RK100x5	1	5.330	14.41	76.81	S355
GRK3	RK80x4	1	0.911	9.22	8.40	S355
GRK4	RK80x4	1	1.620	9.22	14.94	S355
GRK5	RK80x5	1	1.905	9.22	17.56	S355
GRK6	RK80x5	1	2.280	9.22	21.02	S355
LG1	L80x4	10	0.080	6.17	4.94	S355
BLG1	27x288x16	1	0.274	35.17	9.64	S355
BLG2	143x200x10	1	0.143	15.70	2.25	S355
BLG3	95x110x10	2	0.095	8.64	1.64	S355
BLG4	57x200x10	1	0.057	15.70	0.89	S355
BLG4A	80x120x10	2	0.080	9.42	1.51	S355
BLG5	80x260x10	2	0.080	20.41	3.27	S355
BLG6	40x78x10	2	0.040	6.12	0.49	S355
BLG7	220x220x16	1	0.220	27.63	6.08	S355
BLG8	50x50x10	2	0.050	3.93	0.39	S355
BLG9	160x330x16	1	0.160	41.45	6.63	S355
BLG10	95x125x10	1	0.095	9.81	0.93	S355
<b>KRG1</b>		<b>RAZEM</b>				<b>237.61 kg</b>
Tolerancja walcowania 3% - przyjęto 1.5%				0.015	3.6	
Elementy złączone 2.5%				0.025	5.9	
<b>ŁĄCZNIE ELEMENTÓW</b>					<b>247.1</b>	
				<b>4</b>	<b>988.5</b>	

I GM Barbara Becherowska

**57-100 Strzelin, ul. Lesna 6**

Nazwa opracowania:

## PROJEKT BUDOWLANY

Adres obiektu:

Długoleka, ul. Robotnicza 55-095 MIRKÓW dz nr 251/22

Investor i adres

GMINA DŁUGOŁĘKA

Przedmiot rysu

DZWIĘCIK RYBOKI KROK...

--	--

GARAZ	
-------	--

1	2	3	4	5	6	7	8	9	10	11	12	13	14	15	16	17	18	19	20	21	22	23	24	25	26	27	28	29	30	31	32	33	34	35	36	37	38	39	40	41	42	43	44	45	46	47	48	49	50	51	52	53	54	55	56	57	58	59	60	61	62	63	64	65	66	67	68	69	70	71	72	73	74	75	76	77	78	79	80	81	82	83	84	85	86	87	88	89	90	91	92	93	94	95	96	97	98	99	100	101	102	103	104	105	106	107	108	109	110	111	112	113	114	115	116	117	118	119	120	121	122	123	124	125	126	127	128	129	130	131	132	133	134	135	136	137	138	139	140	141	142	143	144	145	146	147	148	149	150	151	152	153	154	155	156	157	158	159	160	161	162	163	164	165	166	167	168	169	170	171	172	173	174	175	176	177	178	179	180	181	182	183	184	185	186	187	188	189	190	191	192	193	194	195	196	197	198	199	200	201	202	203	204	205	206	207	208	209	210	211	212	213	214	215	216	217	218	219	220	221	222	223	224	225	226	227	228	229	230	231	232	233	234	235	236	237	238	239	240	241	242	243	244	245	246	247	248	249	250	251	252	253	254	255	256	257	258	259	260	261	262	263	264	265	266	267	268	269	270	271	272	273	274	275	276	277	278	279	280	281	282	283	284	285	286	287	288	289	290	291	292	293	294	295	296	297	298	299	300	301	302	303	304	305	306	307	308	309	310	311	312	313	314	315	316	317	318	319	320	321	322	323	324	325	326	327	328	329	330	331	332	333	334	335	336	337	338	339	340	341	342	343	344	345	346	347	348	349	350	351	352	353	354	355	356	357	358	359	360	361	362	363	364	365	366	367	368	369	370	371	372	373	374	375	376	377	378	379	380	381	382	383	384	385	386	387	388	389	390	391	392	393	394	395	396	397	398	399	400	401	402	403	404	405	406	407	408	409	410	411	412	413	414	415	416	417	418	419	420	421	422	423	424	425	426	427	428	429	430	431	432	433	434	435	436	437	438	439	440	441	442	443	444	445	446	447	448	449	450	451	452	453	454	455	456	457	458	459	460	461	462	463	464	465	466
---	---	---	---	---	---	---	---	---	----	----	----	----	----	----	----	----	----	----	----	----	----	----	----	----	----	----	----	----	----	----	----	----	----	----	----	----	----	----	----	----	----	----	----	----	----	----	----	----	----	----	----	----	----	----	----	----	----	----	----	----	----	----	----	----	----	----	----	----	----	----	----	----	----	----	----	----	----	----	----	----	----	----	----	----	----	----	----	----	----	----	----	----	----	----	----	----	----	----	-----	-----	-----	-----	-----	-----	-----	-----	-----	-----	-----	-----	-----	-----	-----	-----	-----	-----	-----	-----	-----	-----	-----	-----	-----	-----	-----	-----	-----	-----	-----	-----	-----	-----	-----	-----	-----	-----	-----	-----	-----	-----	-----	-----	-----	-----	-----	-----	-----	-----	-----	-----	-----	-----	-----	-----	-----	-----	-----	-----	-----	-----	-----	-----	-----	-----	-----	-----	-----	-----	-----	-----	-----	-----	-----	-----	-----	-----	-----	-----	-----	-----	-----	-----	-----	-----	-----	-----	-----	-----	-----	-----	-----	-----	-----	-----	-----	-----	-----	-----	-----	-----	-----	-----	-----	-----	-----	-----	-----	-----	-----	-----	-----	-----	-----	-----	-----	-----	-----	-----	-----	-----	-----	-----	-----	-----	-----	-----	-----	-----	-----	-----	-----	-----	-----	-----	-----	-----	-----	-----	-----	-----	-----	-----	-----	-----	-----	-----	-----	-----	-----	-----	-----	-----	-----	-----	-----	-----	-----	-----	-----	-----	-----	-----	-----	-----	-----	-----	-----	-----	-----	-----	-----	-----	-----	-----	-----	-----	-----	-----	-----	-----	-----	-----	-----	-----	-----	-----	-----	-----	-----	-----	-----	-----	-----	-----	-----	-----	-----	-----	-----	-----	-----	-----	-----	-----	-----	-----	-----	-----	-----	-----	-----	-----	-----	-----	-----	-----	-----	-----	-----	-----	-----	-----	-----	-----	-----	-----	-----	-----	-----	-----	-----	-----	-----	-----	-----	-----	-----	-----	-----	-----	-----	-----	-----	-----	-----	-----	-----	-----	-----	-----	-----	-----	-----	-----	-----	-----	-----	-----	-----	-----	-----	-----	-----	-----	-----	-----	-----	-----	-----	-----	-----	-----	-----	-----	-----	-----	-----	-----	-----	-----	-----	-----	-----	-----	-----	-----	-----	-----	-----	-----	-----	-----	-----	-----	-----	-----	-----	-----	-----	-----	-----	-----	-----	-----	-----	-----	-----	-----	-----	-----	-----	-----	-----	-----	-----	-----	-----	-----	-----	-----	-----	-----	-----	-----	-----	-----	-----	-----	-----	-----	-----	-----	-----	-----	-----	-----	-----	-----	-----	-----	-----	-----	-----	-----	-----	-----	-----	-----	-----	-----	-----	-----	-----	-----	-----	-----	-----	-----	-----	-----	-----	-----	-----	-----	-----

upr. nr LOD/2309/POOK/14

KRG1  
4szt.

4szt.